

Corcraft
PRODUCTS

APPAREL

TEXTILES



INSTITUTIONAL
APPAREL/MISCELLANEOUS/ Textiles



NYS
DEPARTMENT
OF
CORRECTIONAL
SERVICES

Sweat Shirts

- 50/50 cotton/polyester crew neck
- Available in green, grey, and brown
- Assorted special order fabric colors and custom silk screening are available for this product. Contact your sales representative for details.

C05-3712-
Sizes: Small to 7X

Tee Shirts

- Flat knit, white
- Custom silkscreening is available for this product. Pricing and quotations are available upon request. Contact your sales representative for details.

C20-3782-
Sizes: Small to 7X

Slacks, Men's

- 7½-oz twill, cotton/polyester, zipper fly, 2" elastic waist, snap closure, one rear pocket
- Not available in grey and blue

C03-3733-
Sizes: Small to 7X

Jumpsuit, Men's

- Cotton/polyester suiting, short sleeve, velcro closure, no pockets

C16-3740-
Sizes: Small to 3X

Clicker Coat, Men's

- 65/35 cotton/polyester, zipper front, quilt lining, 100% cotton knit collar/cuffs—green only

C05-3711- -27
Sizes: Small to 7X

Jacket, Men's Golf Style

- Cotton/polyester suiting
- Available in green, grey, and tan

C05-3710-
Sizes: Small to 3X

Work Shirts

- Men's short sleeve, button front twill/polyester, wash/wear
- Not available in grey and blue

C02-3724-
Sizes: Small to 7X

Jockey Shorts, Men's

- Rib knit, white
- C20-3785-
Sizes: Small to 7X

Boxer Shorts, Men's

- White broadcloth
50/50 cotton/polyester

C01-3776-
Sizes: Small to 7X

Pajamas, Men's

- 50/50 cotton/polyester
- Machine washable and dryable
- Available in white or green
- Pajamas are sold by the dozen

Top

- Coat-style top
- Three-button front, short sleeves, chest pocket on left breast

Pants

- Full-length legs
- Elasticized waist

Pajamas, Coat Style

C01-3192- (white)
C01-3192- -27 (green)

Sizes: Small to 7X

Thermal Underwear

- 50/50 cotton/polyester
- Thermal knit and tuck waffle pattern
- Machine washable and dryable
- White only
- Thermals are sold by the dozen

Top

- Crew neck top
- Long sleeved
- Ribbed knit cuff

Bottoms

- Full-length legs
- Ribbed knit ankle cuff

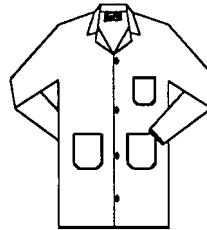
Thermal Top

C20-3775
Sizes: Small to 7X

Thermal Bottom

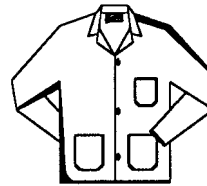
C20-3774
Sizes: Small to 7X

MISCELLANEOUS GARMENTS



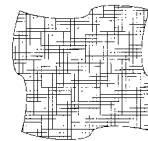
Knee Length Lab Coats

- White
- C37-1700-
Sizes: Small to 3X



Staff Lab Coats

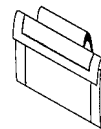
- White
- C37-1600-
Sizes: Small to 2X



Handkerchief

- Cotton, white only
- Sold by the dozen

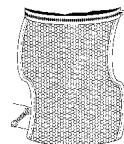
C11-370600
14 X 14



Glove Pouch

- Disposable, vinyl, belt-mounted, velcro sealing strip, black
- Sold by the dozen

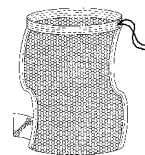
C99-399000



Raschel Knit Utility Bags

- Nylon zipper
- Sold by the dozen
- White

C01-021600
30x36



- Draw string
- Sold by the dozen
- White

C01-0216DS
30x36
C01-021620
20x36

Apron

- White or green twill, 65/35 cotton/polyester
- Sold by the dozen

C17-395000, White
C17-395027, Green

APPAREL

MALE

APPAREL

Corcraft PRODUCTS offers a wide range of utilitarian clothing for men and women in many sizes. In addition, Corcraft manufactures miscellaneous items such as handkerchiefs, utility bags, and glove pouches.



MALE APPAREL

HOW TO ORDER APPAREL...

Your clothing order will be processed most efficiently if you use current and correct codes on your purchase order. Every product in this catalog has an item code and spaces after it for the two letter-size code and two-digit color code. You must choose size and color and use codes, *not word descriptions*. Here is an example for a *sweatshirt*.

(Item Code) (Size Code) (Color Code)
C05-3712- L 0 - 2 7

You will find the size and color codes in the charts below. The next pages list all apparel products, with asterisks indicating areas where you record your choices. Here are some additional points you need to know.

- Apparel items are manufactured, stocked, and sold only in dozens, and one dozen is the minimum order (unless otherwise noted).
- Corcraft uses several shipping vendors including UPS, RPS, and others. Some orders may be shipped by our own Corcraft fleet. *Remember, with Corcraft, shipping is free.*

Size Chart	Equivalent to Men's			Ordering
SIZE	CHEST	WAIST	NECK	SYMBOL
Small	34-36	28-32	14-14½	SO
Medium	38-40	34-36	15-15½	MO
Large.....	42-44	38-40	16-16½	LO
Extra Large.....	46-48	42-44	17-17½	XL
Extra, Extra Large	—	—	—	2X
Extra, Extra, Extra Large.....	—	—	—	3X
.....				4X
.....				5X
.....				6X
.....				7X

Color Codes:

White	10	Grey	12
Brown	13	Tan	18
Green	27	Blue.....	41
Orange.....	55		

** indicates size code

**-* indicates size and color code

PRICES

Prices are listed in Corcraft's *Pricing and Specification Guide* available free from your Corcraft sales representative or by calling the Customer Service Unit.

The *Pricing and Specification Guide* is also downloadable from our web site as a .pdf file requiring Adobe Acrobat Reader, downloadable at no cost on the web.

Our web site is corcraft.ny.gov

APPAREL

FEMALE

APPAREL



FEMALE APPAREL

To Order:

These products are manufactured, stocked, and sold in dozens only. Orders must be in multiples of a dozen per item/size.

Color Codes:

White.....10 Green27

Size Chart

SIZE	SIZE CODE	Slacks/Skort	Blouse
		WAIST SIZE	CHEST SIZE
Small	SO	23-25	28-30
Medium	MO	26-28	32-34
Large	LO	30-32	36-38
XL	XL	34-36	40-42
2X	2X	38-40	44-46
3X	3X	42-44	46-48
4X	4X	46-48	50-52
5X	5X	50-52	54-56

** - ** indicates size and color code

Skort/Culotte, Female Inmate

- 65/35 polyester/cotton
- Side pockets
- Green only

C03-9660- * * - 2 7
 Sizes: Small to 5X

Blouse, Short Sleeve, Female Inmate

- 65/35 polyester/cotton
- No pocket
- Available in white and green

C02-9624- * * - * *
 Sizes: Small to 5X

Slacks, Female Inmate

- 65/35 polyester/cotton
- Side pockets
- Available in white and green

C03-9633- * * - * *
 Sizes: Small to 5X

Pajamas, Female Inmate

Material

- 50/50 cotton/polyester
- Minimum thread count of 95 warp and 54 fill
- Machine washable and dryable

Style

Top

- Coat-style top
- Three-button front, short sleeves, chest pocket on left side

Pants

- Full-length legs
- Elasticized waist

- Green only
- Sold by the dozen

C01-3192- * * - 2 7 F
 Sizes: Small to 5X

Corcraft is your NYS preferred source vendor — place your order today!

All Corcraft customers can get assistance from a Corcraft sales representative. They provide detailed information on the more than 300 Corcraft products and can help in selecting the best solution and in placing orders. If you have not been contacted by Corcraft, please call our Customer Service Unit listed to the right. To place an order directly to our headquarters, FAX or mail your purchase order using the contact information at the right. **If you FAX your purchase order, please do not mail a duplicate.**



NYS DEPARTMENT OF CORRECTIONAL SERVICES
 DIVISION OF INDUSTRIES

550 Broadway
 Albany, New York 12204-2802

Order Services Mail to above address
 Order Services FAX (800) 898-5895 or (518) 436-6007
 Customer Service Voice (800) 436-6321 ext. 2620
 (518) 436-6321 ext. 2620
 Web corcraft.ny.gov

Corcraft accepts the American Express® Corporate Purchasing Card.

